

Collaboration to Maximize Data Collection and Reporting: Spotlight on Iowa's SPDG Spotlights

Shelly Menendez, PhD, Measurement Incorporated
smenendez@measinc.com

SPECIALLY DESIGNED INSTRUCTION
IOWASDI
DIAGNOSE • DESIGN • DELIVER • ENGAGE

Presentation Goals

- To inform the audience about Iowa's *Specially Designed Instruction* initiative, funded through SPDG
- To share the format, data collection, and analyses for Iowa's *SPDG Spotlight* briefs
- To demonstrate the utility and the pros and cons of evaluation report briefs
- To share key ingredients for ensuring end-to-end quality reporting

Iowa's Specially Designed Instruction (SDI) Initiative

Goal: To improve systems of professional development, coaching, technical assistance, and dissemination of knowledge about effective SDI practices to improve literacy outcomes for students with disabilities.

Why?

- Increasing achievement gap in literacy outcomes between students with disabilities and students without disabilities
- Variability in SDI implementation across the state

Iowa's Specially Designed Instruction (SDI) Initiative



State, Regional, and Local Supports for SDI Implementation

Iowa's Specially Designed Instruction (SDI) Initiative

SDI Framework



DIAGNOSE



DESIGN



DELIVER



ENGAGE

Iowa's Specially Designed Instruction (SDI) Initiative

For example*...

Diagnose for Instructional Design

Use RIOT and SCIL in order to:

1. Define areas of concern and verify potential reasons for the concern
2. Identify strengths, interests and preferences that sustain learner engagement.
3. Determine critical supports needed for learner success.

* See [SDI Framework](#) for all components and critical features



Considerations for Reporting

- Usability testing
- Continuous improvement model
- Build buy-in
- Ongoing communication



Iowa SPDG Spotlight Briefs

Frequency: 3 times a year; January, June, August/September

Topics: Grant activities (e.g., content, PD, coaching), implementation of SDI practices, and student outcomes

Length: 5-8 pages

SPECIALLY DESIGNED INSTRUCTION
IOWASDI
DIAGNOSE • DESIGN • DELIVER • ENGAGE

SPDG Spotlight

January 2020, Issue 10

[January 2019](#) teacher outcomes and coaching supports

[May 2019](#) student outcomes

[January 2020](#) longitudinal teacher outcomes

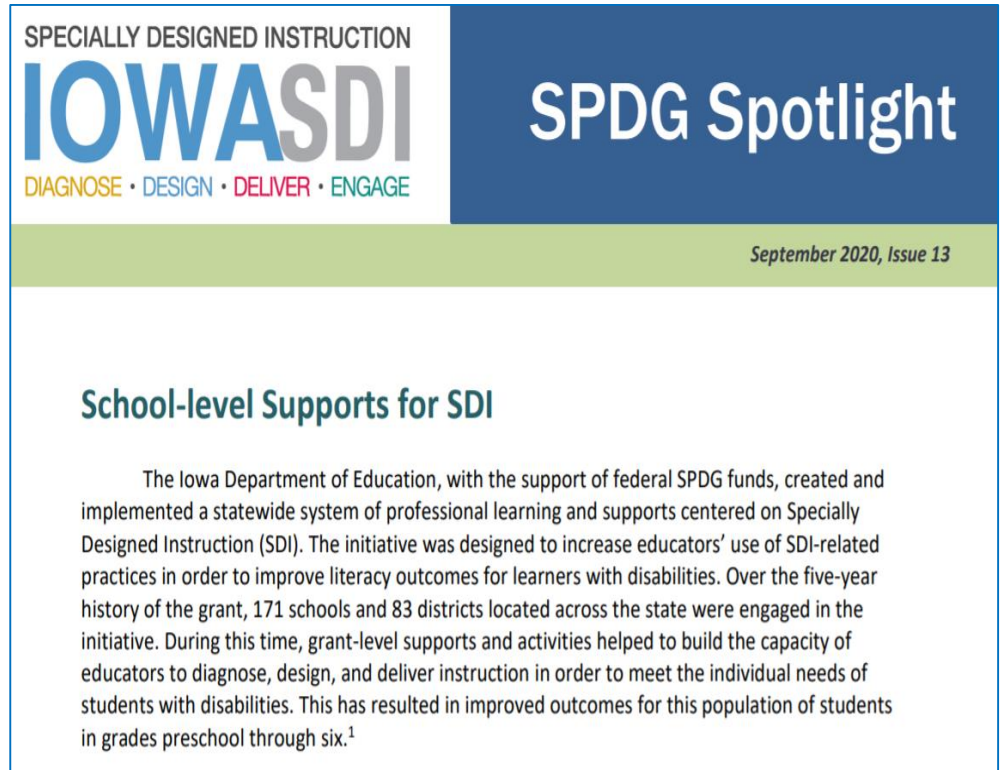
[September 2020](#) school supports

Iowa SPDG Spotlight Briefs

[Data: Post PD Feedback Form](#), [SDI Coaching Log](#), [SDI Framework Implementation Tool \(SDI FIT\)](#), [Coach Self-Assessment \(CSA\)](#), [School Survey](#), [FastBridge](#)

Linking data collection tools

- Register teachers and coaches
- Unique survey link sent via [individual emails](#)
- Individual student data

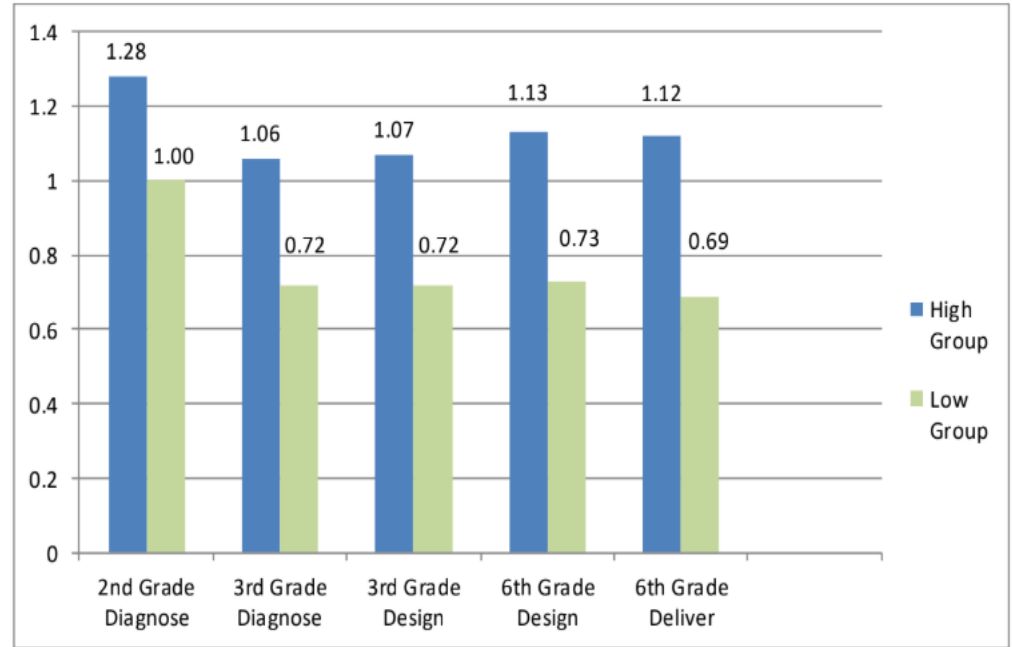


Picture of sample report

Iowa SPDG Spotlight Briefs

Analyses

- Descriptives
- Disaggregation
- Correlations
- Longitudinal
- High-low implementation comparisons



Example of High-Low Implementation Analyses

Utility of Briefs

- Informs ongoing decisions regarding the rollout and implementation of PD and coaching supports
- Informs the content and format of supports and resources
- Disseminates best practices from the field
- Provides continuous communication to the field

Sample Recommendations

Overall, the findings provide valuable insights to Iowa as they begin to engage in a larger scale-up during the final year of the grant and beyond. One, it appears that at least 3 years of training are needed to create a critical mass of educators and coaches who are adept at supporting and implementing SDI with fidelity. It is important, therefore, that new schools, educators, and SDI Coaches commit to a three-year learning and implementation cycle in order to produce similar results. Continued use of the SDI FIT and CSA will enable teams to track their progress and inform training and professional growth plans that help teachers and coaches reach target implementation levels.

Two, the training and resources developed through the grant have been important for building a common language and understanding of specially designed instruction. Indeed, one of the reasons why Iowa developed the SDI Framework was to clarify a uniform process for diagnosing, designing, and delivering instruction that is based on individual learner needs. We encourage Iowa to continue communicating the importance of professional learning opportunities and materials to promote consistency.

Lastly, to ensure the long-term sustainability of the SDI work, Iowa will need to continue building an infrastructure of supports cascading from the Department to the AEA, district, and school levels. Good partnerships and strong coordination should continue beyond the grant funding period.

Pros and Cons of Report Briefs

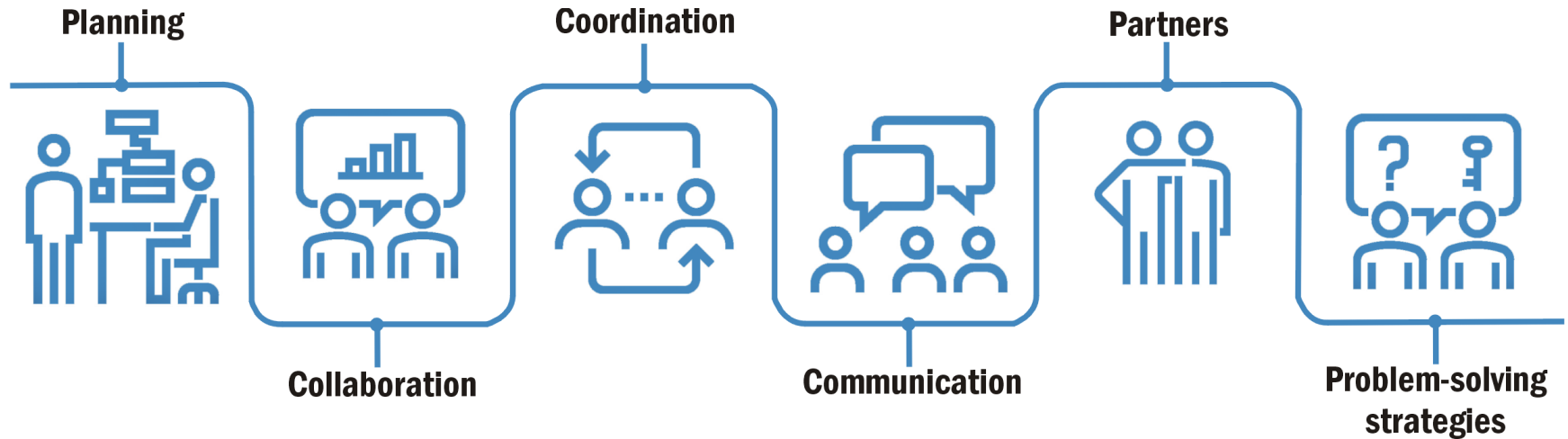
Pros

- Real-time data reporting
- Reader-friendly and digestible
- Efficient means for summarizing data findings
- Focus on individual components and goals of a large grant

Cons

- Need to be ready to turnaround data quicker than annual reports
- Shorter data collection windows

Ensuring End-to-End Quality in Reporting



Questions

Thank you!

For more information about data and reporting, please
contact Shelly Menendez.
smenendez@measinc.com

Visit our website: [Measurement Incorporated](#)